

# MINI / MICRO ROK 2026

## IDENTIFICATION SHEET

This Identification Sheet reproduces descriptions, illustrations and dimensions of the **MINI AND MICRO ROK.**



### ATTENTION

**ALL THE ENGINE PARTS MUST BE ORIGINAL BY VORTEX ROK.**

Neither engines nor accessories can be modified. By this we mean any shape, content or function changes which may differ from what originally produced (manufactured and assembled). Furthermore this includes any addition and /or removal of material.  
All dimensions in the technical drawings are in mm.



## MINI / MICRO ROK 2026






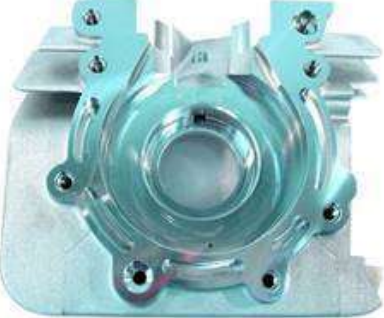
TECHNICAL INFORMATION AND CHARACTERISTICS	
ORIGINAL BORE	41,96 mm
MAX ALLOWED BORE	42.10 mm
STROKE	43 +/- 0,1 mm
ORIGINAL DISPLACEMENT	60 cc
CONROD C-TO-C DISTANCE	90 +/- 0,1 mm
WEIGHT OF CONROD	94g +/- 2g
SPROCKET	Z10-Z11-Z12
CYLINDER DEVELOPEMENT AND DISTRIBUTION	
EXHAUST PORT	154° +/- 2° (US)
MAIN TRANSFER	116° ±1.5°
ADMISSION	143° ±1.5°
<u>Check of the distribution as described in the <b>ROK CUP USA 2026 Technical Regulation.</b></u>	
<u>Measurement must be done with engine head dismantled (studs tightening torque: 1.8 kgm).</u>	

**ATTENTION**

**ALL THE ENGINE PARTS MUST BE ORIGINAL BY VORTEX ROK.**

Neither engines nor accessories can be modified. By this we mean any shape, content or function changes which may differ from what originally produced (manufactured and assembled). Furthermore this includes any addition and /or removal of material.  
All dimensions in the technical drawings are in mm.

# MINI / MICRO ROK 2026

<p>PICTURE ENGINE UPPER SIDE</p>	<p>PICTURE ENGINE LOWER SIDE</p>
	
<p>CYLINDER BASE</p>	<p>CYLINDERHEAD AND COMBUSTION CHAMBER</p>
	
<p>PICTURE OF THE CRANKCASE</p>	<p>INTERIOR PICTURE OF THE CRANKCASE</p>
	

**ATTENTION**

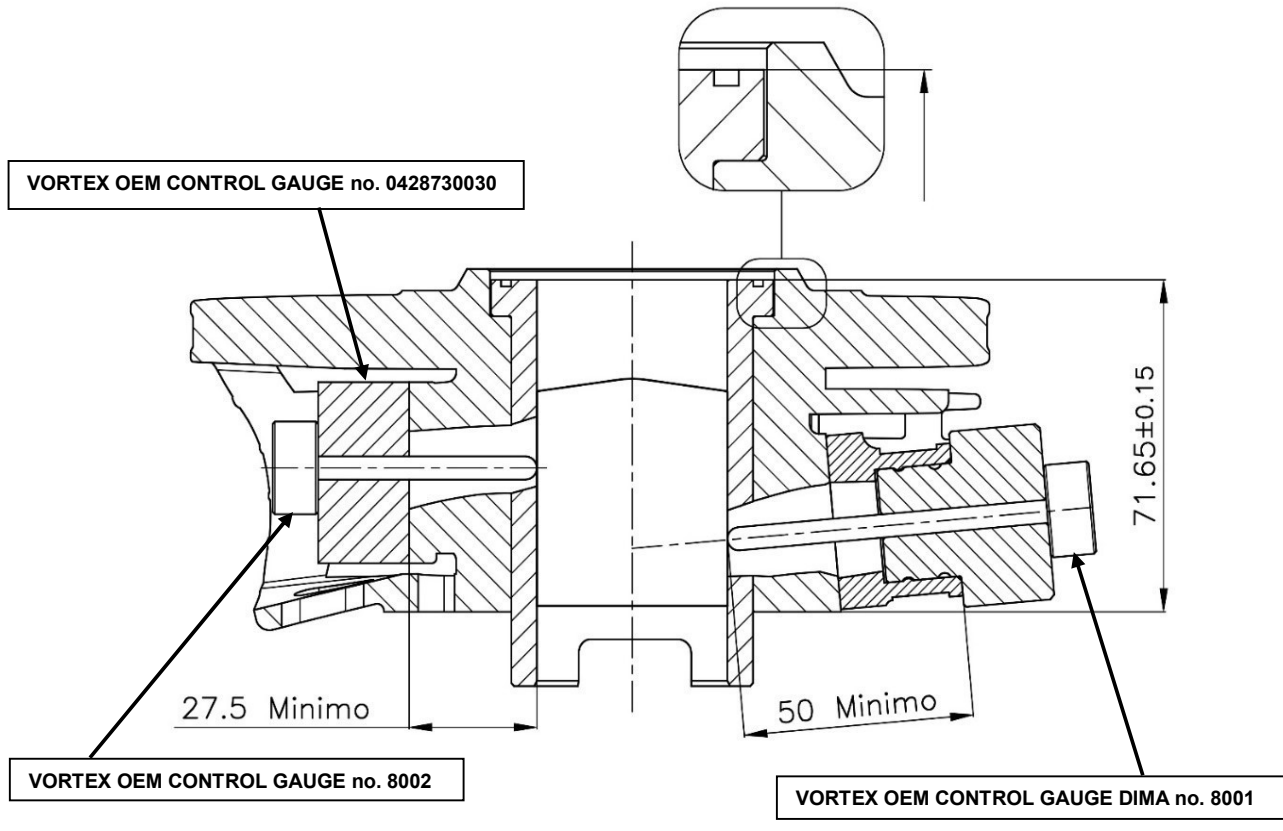
**ALL THE ENGINE PARTS MUST BE ORIGINAL BY VORTEX ROK.**

Neither engines nor accessories can be modified. By this we mean any shape, content or function changes which may differ from what originally produced (manufactured and assembled). Furthermore this includes any addition and /or removal of material.  
All dimensions in the technical drawings are in mm.

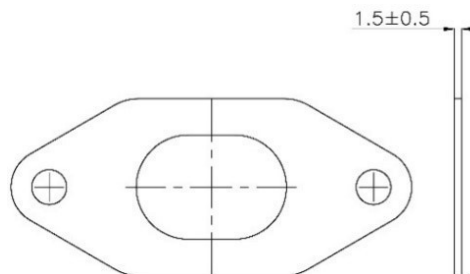
# MINI / MICRO ROK 2026

## CYLINDER SECTION

### MINIMUM DISTANCE OF THE CARBURETTOR SUPPORTING PLATE FROM THE CYLINDER AXLE



## EXHAUST GASKET



### ATTENTION

**ALL THE ENGINE PARTS MUST BE ORIGINAL BY VORTEX ROK.**

Neither engines nor accessories can be modified. By this we mean any shape, content or function changes which may differ from what originally produced (manufactured and assembled). Furthermore this includes any addition and /or removal of material.  
All dimensions in the technical drawings are in mm.

# MINI / MICRO ROK 2026

PISTON	
<div style="border: 1px solid black; padding: 5px; width: fit-content; margin: 10px auto;"> <p style="text-align: center;">- WEIGHT - 59 gr +/- 5 gr</p> </div>	
PISTON PIN	PISTON RING DETAIL PIECE
<div style="border: 1px solid black; padding: 5px; width: fit-content; margin: 10px auto;"> <p style="text-align: center;">- WEIGHT - 15 gr Min</p> </div>	

<b>ATTENTION</b>	<p><b><u>ALL THE ENGINE PARTS MUST BE ORIGINAL BY VORTEX ROK.</u></b></p> <p>Neither engines nor accessories can be modified. By this we mean any shape, content or function changes which may differ from what originally produced (manufactured and assembled). Furthermore this includes any addition and /or removal of material.</p> <p>All dimensions in the technical drawings are in mm.</p>
------------------	--

## MINI / MICRO ROK 2026

### PICTURE AND MARKING OF THE PISTON

Mandatory to have the brand VORTEX cast piston as shown in the picture.

Mandatory to have the number of the mold cast as shown in the picture.

OPTION 1



OPTION 1



OPTION 2



OPTION 2



### ATTENTION

**ALL THE ENGINE PARTS MUST BE ORIGINAL BY VORTEX ROK.**

Neither engines nor accessories can be modified. By this we mean any shape, content or function changes which may differ from what originally produced (manufactured and assembled). Furthermore this includes any addition and /or removal of material.  
All dimensions in the technical drawings are in mm.

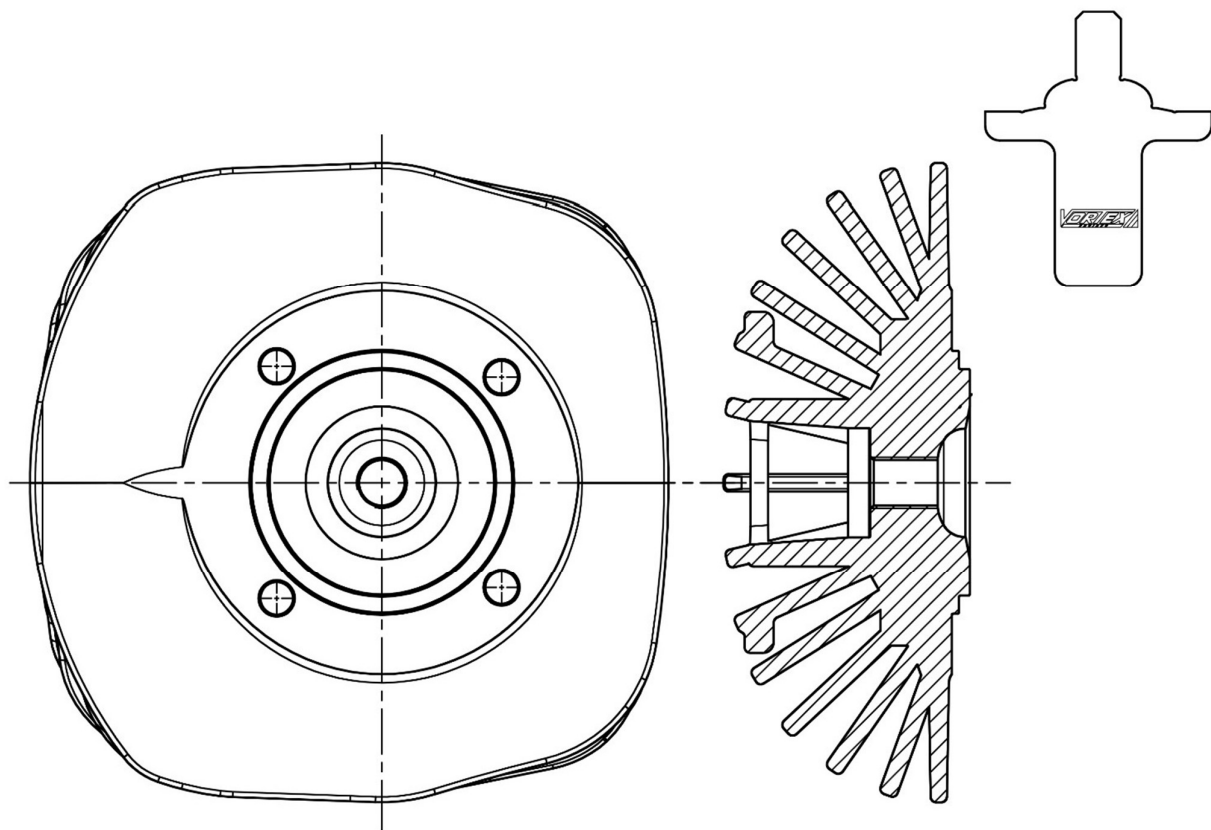
## MINI / MICRO ROK 2026

### DRAWING OF CYLINDERHEAD AND COMBUSTION CHAMBER

Average taken from both sides of the piston, using Rotax 2.0mm solder 100g #9735

**SQUISH THICKNESS – SQUISH - EPESSEUR DE SQUISH: 0,75 mm MIN**

Template gauge for checking the combustion chamber profile



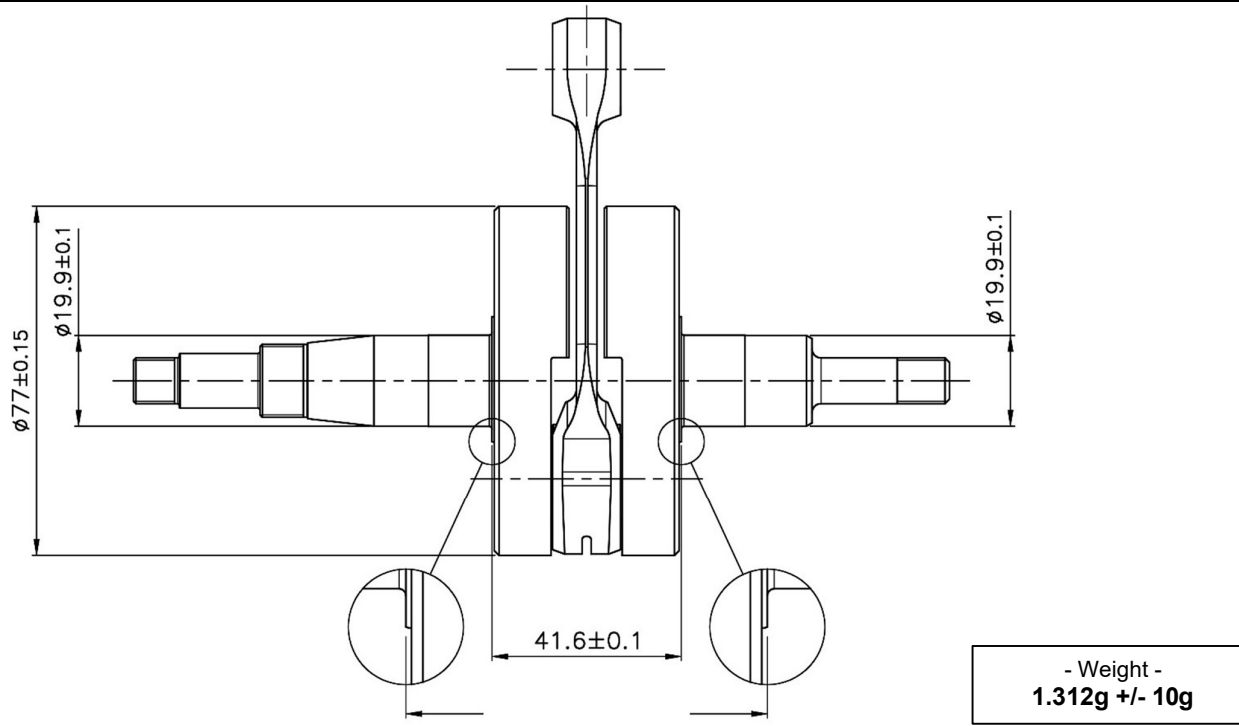
#### ATTENTION

**ALL THE ENGINE PARTS MUST BE ORIGINAL BY VORTEX ROK.**

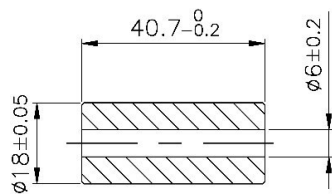
Neither engines nor accessories can be modified. By this we mean any shape, content or function changes which may differ from what originally produced (manufactured and assembled). Furthermore this includes any addition and /or removal of material.  
All dimensions in the technical drawings are in mm.

# MINI / MICRO ROK 2026

## CRANKSHAFT AND CRANKPIN



## CRANK PIN



- Weight -  
71g +/- 1g

### OPTION 1



### OPTION 2



## ATTENTION

**ALL THE ENGINE PARTS MUST BE ORIGINAL BY VORTEX ROK.**

Neither engines nor accessories can be modified. By this we mean any shape, content or function changes which may differ from what originally produced (manufactured and assembled). Furthermore this includes any addition and /or removal of material. All dimensions in the technical drawings are in mm.

## MINI / MICRO ROK 2026

### PICTURES AND MARKING OF CONROD



### PICTURE OF CRANKSHAFT WITH THE BALANCER



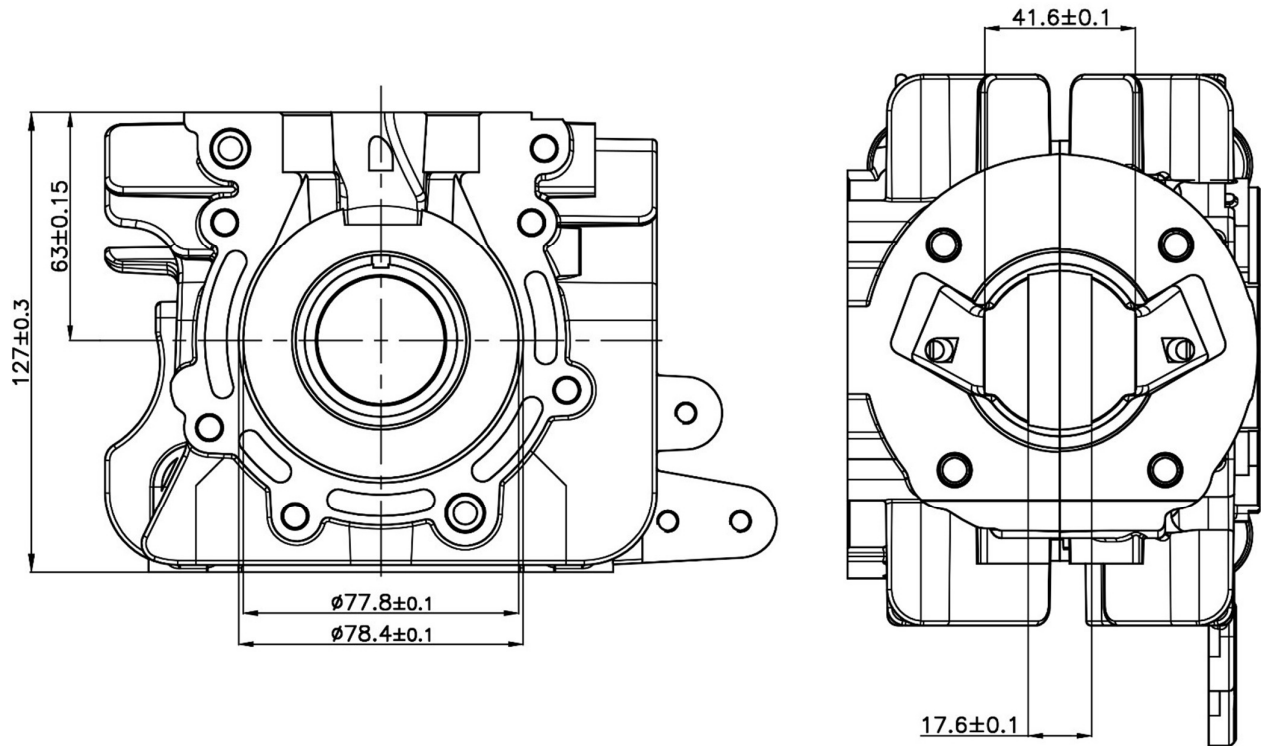
### ATTENTION

**ALL THE ENGINE PARTS MUST BE ORIGINAL BY VORTEX ROK.**

Neither engines nor accessories can be modified. By this we mean any shape, content or function changes which may differ from what originally produced (manufactured and assembled). Furthermore this includes any addition and /or removal of material.  
All dimensions in the technical drawings are in mm.

# MINI / MICRO ROK 2026

## INTERIOR VIEW OF THE CRANKCASE AND ASSEMBLY VIEW



## CRANKSHAFT BEARINGS

TYPE	DIMENSIONS	CHARACTERISTICS
Free brand 6204.C4	20x47x14mm	Steel Balls 8

### ATTENTION

**ALL THE ENGINE PARTS MUST BE ORIGINAL BY VORTEX ROK.**

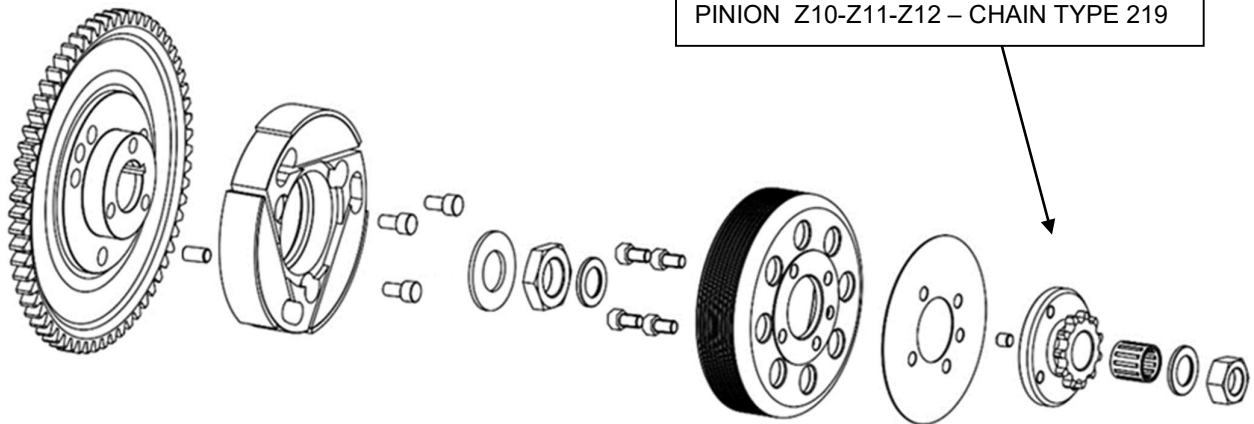
Neither engines nor accessories can be modified. By this we mean any shape, content or function changes which may differ from what originally produced (manufactured and assembled). Furthermore this includes any addition and /or removal of material.  
All dimensions in the technical drawings are in mm.

## MINI / MICRO ROK 2026

### DETAIL PHOTO OF THE CRANKSHAFT OIL SEAL POSITION



### COMPL. CLUTCH ROTOR WITH STARTING GEAR



**PARTS QUANTITY: 20**

**WEIGHT OF THE COMPLETE CLUTCH WITH STARTING GEAR AND PROTECTION: 855 gr +/- 30gr**

**ENGAGEMENT SPEED (MAXIMUM) CAN BE VERIFIED IN EVERY MOMENT OF THE EVENT: 3500RPM**

**DUST COVER IS RECCOMENDED BUT NOT MANDATORY**

**ATTENTION**

**ALL THE ENGINE PARTS MUST BE ORIGINAL BY VORTEX ROK.**

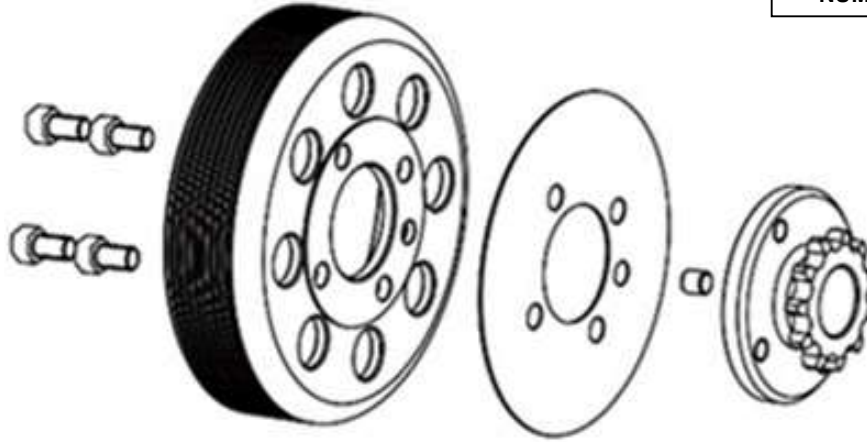
Neither engines nor accessories can be modified. By this we mean any shape, content or function changes which may differ from what originally produced (manufactured and assembled). Furthermore this includes any addition and /or removal of material.

All dimensions in the technical drawings are in mm.

# MINI / MICRO ROK 2026

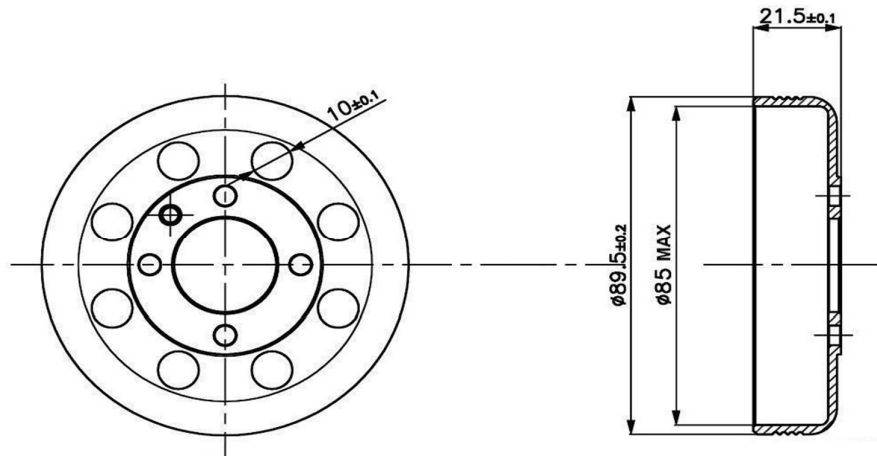
## HOUSING CLUTCH

NUMBER OF PARTS: 8



WEIGHT OF THE CLUTCH HOUSING WITH SPROCKET

264gr Min.



WEIGHT

177gr ± 15gr

### ATTENTION

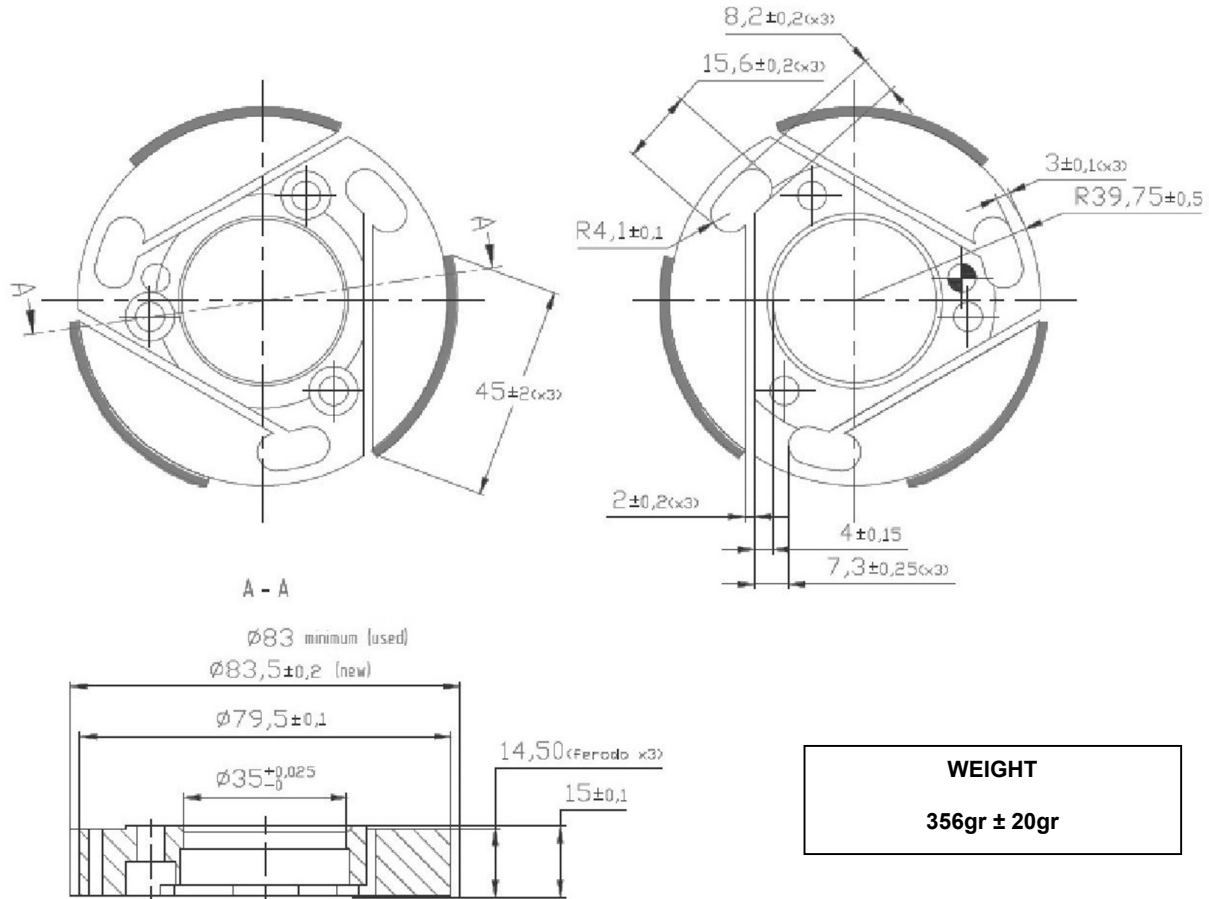
**ALL THE ENGINE PARTS MUST BE ORIGINAL BY VORTEX ROK.**

Neither engines nor accessories can be modified. By this we mean any shape, content or function changes which may differ from what originally produced (manufactured and assembled). Furthermore this includes any addition and /or removal of material.

All dimensions in the technical drawings are in mm.

# MINI / MICRO ROK 2026

## ROTOR CLUTCH



### ATTENTION

**ALL THE ENGINE PARTS MUST BE ORIGINAL BY VORTEX ROK.**

Neither engines nor accessories can be modified. By this we mean any shape, content or function changes which may differ from what originally produced (manufactured and assembled). Furthermore this includes any addition and /or removal of material.

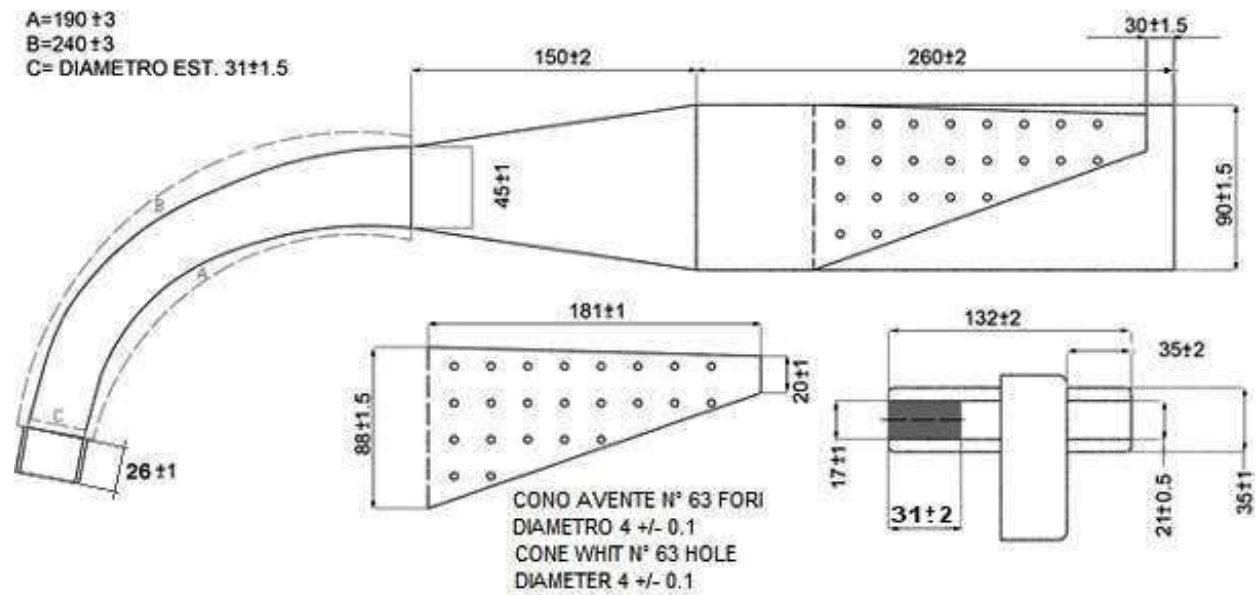
All dimensions in the technical drawings are in mm.

# MINI / MICRO ROK 2026

## EXHAUST MUFFLER

DIMENSION OF COLLECTOR INCLUDING WELDING.

EXHAUST WEIGHT 1,372gr +/- 5%



### ATTENTION

**ALL THE ENGINE PARTS MUST BE ORIGINAL BY VORTEX ROK.**

Neither engines nor accessories can be modified. By this we mean any shape, content or function changes which may differ from what originally produced (manufactured and assembled). Furthermore this includes any addition and /or removal of material.

All dimensions in the technical drawings are in mm.

## MINI / MICRO ROK 2026

### PHOTO AND MARKING OF THE EXHAUST



DURING EXAMINATION, ON THE EXHAUST IT MUST BE INDICATED THE IDENTIFICATION LOGO ROK MINI.

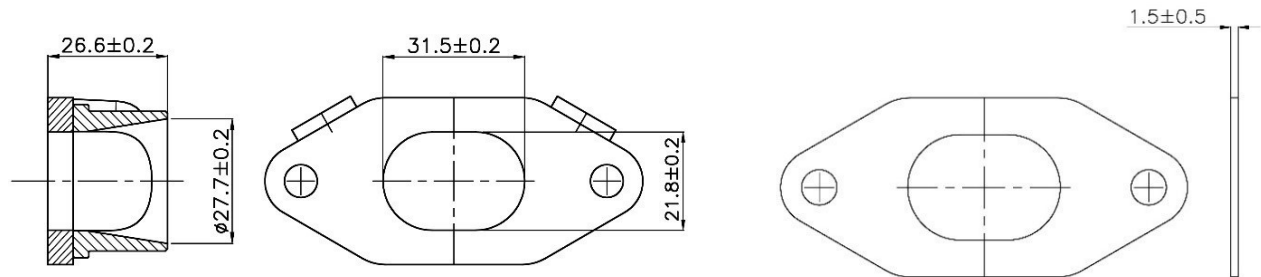
#### ATTENTION

**ALL THE ENGINE PARTS MUST BE ORIGINAL BY VORTEX ROK.**

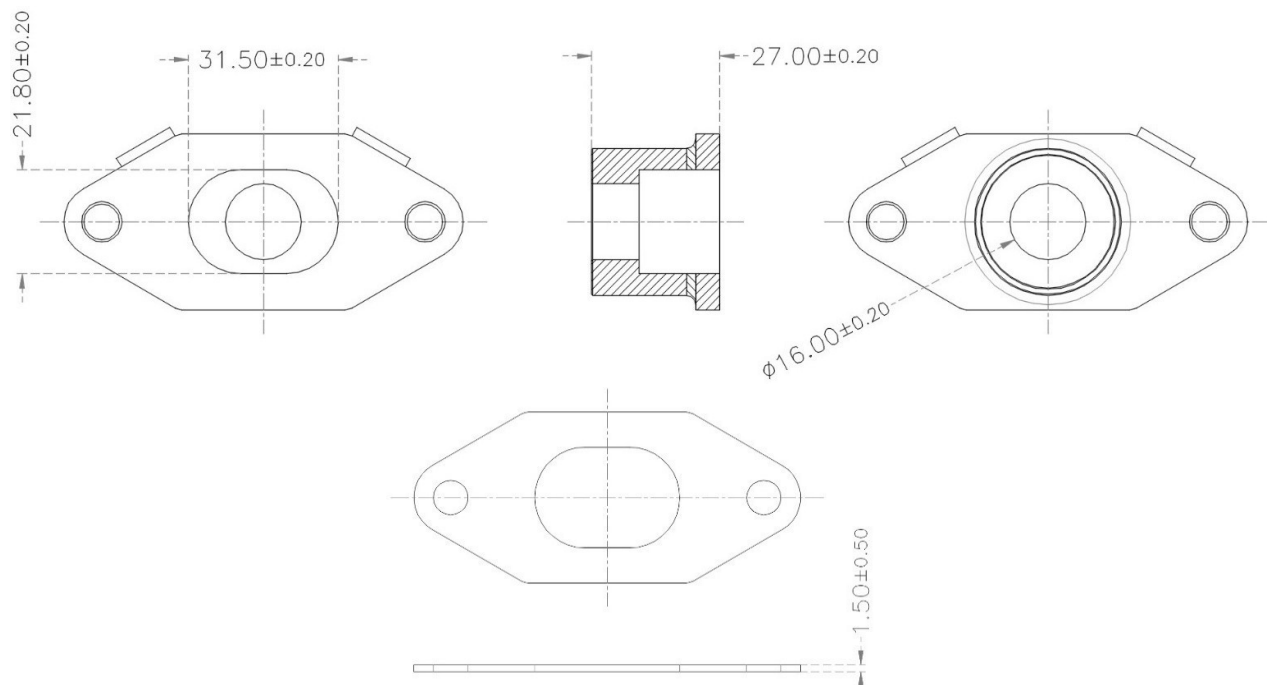
Neither engines nor accessories can be modified. By this we mean any shape, content or function changes which may differ from what originally produced (manufactured and assembled). Furthermore this includes any addition and /or removal of material.  
All dimensions in the technical drawings are in mm.

# MINI / MICRO ROK 2026

## EXHAUST MANIFOLD



## EXHAUST MANIFOLD AND GASKET FOR MICRO CATEGORY



### ATTENTION

**ALL THE ENGINE PARTS MUST BE ORIGINAL BY VORTEX ROK.**

Neither engines nor accessories can be modified. By this we mean any shape, content or function changes which may differ from what originally produced (manufactured and assembled). Furthermore this includes any addition and /or removal of material.

All dimensions in the technical drawings are in mm.

# MINI / MICRO ROK 2026

INLET SILENCER	
MODEL, TYPE	MINI
<p><b>MARKED VORTEX</b> <b>AIR FILTER MESH AS OPTIONAL</b></p>	
<p><b>OPTION 1</b></p>	<p><b>OPTION 2</b></p>

**RUBBER BUSH CAN BE CUT ON ONE SIDE.**

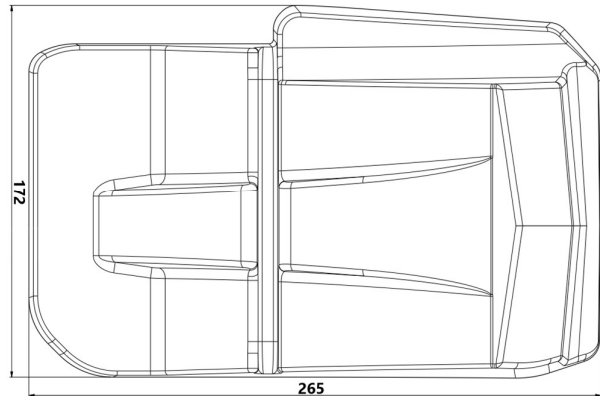
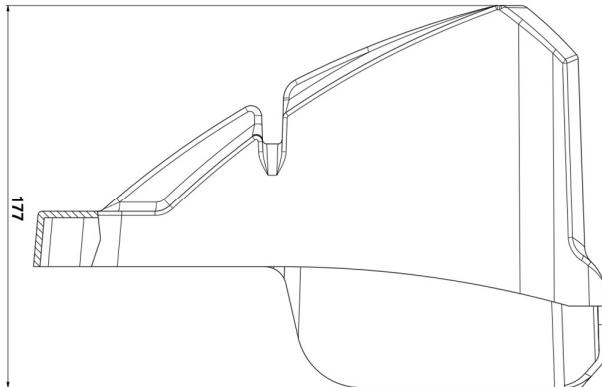
**ATTENTION**

**ALL THE ENGINE PARTS MUST BE ORIGINAL BY VORTEX ROK.**

Neither engines nor accessories can be modified. By this we mean any shape, content or function changes which may differ from what originally produced (manufactured and assembled). Furthermore this includes any addition and /or removal of material.  
All dimensions in the technical drawings are in mm.

## MINI / MICRO ROK 2026

### RAIN PROTECTION INLET SILENCER (OPTIONAL)

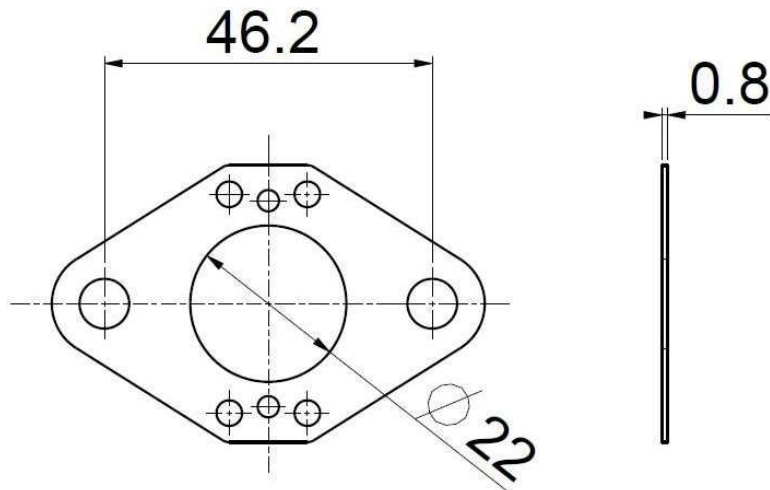


#### ATTENTION

**ALL THE ENGINE PARTS MUST BE ORIGINAL BY VORTEX ROK.**

Neither engines nor accessories can be modified. By this we mean any shape, content or function changes which may differ from what originally produced (manufactured and assembled). Furthermore this includes any addition and /or removal of material.  
All dimensions in the technical drawings are in mm.

## TECHNICAL DRAWING GASKET BETWEEN CARBURETTOR AND ENGINE



### ATTENTION

#### **ALL THE ENGINE PARTS MUST BE ORIGINAL BY VORTEX ROK.**

Neither engines nor accessories can be modified. By this we mean any shape, content or function changes which may differ from what originally produced (manufactured and assembled). Furthermore this includes any addition and /or removal of material.  
All dimensions in the technical drawings are in mm.

## MINI / MICRO ROK 2026

### PICTURES OF SELETTRA IGNITION



### SPARK PLUG



**ONLY AUTHORIZED SPARK PLUG  
NGK B/BR 9 or 10 EG**

### ATTENTION

**ALL THE ENGINE PARTS MUST BE ORIGINAL BY VORTEX ROK.**

Neither engines nor accessories can be modified. By this we mean any shape, content or function changes which may differ from what originally produced (manufactured and assembled). Furthermore this includes any addition and /or removal of material.  
All dimensions in the technical drawings are in mm.

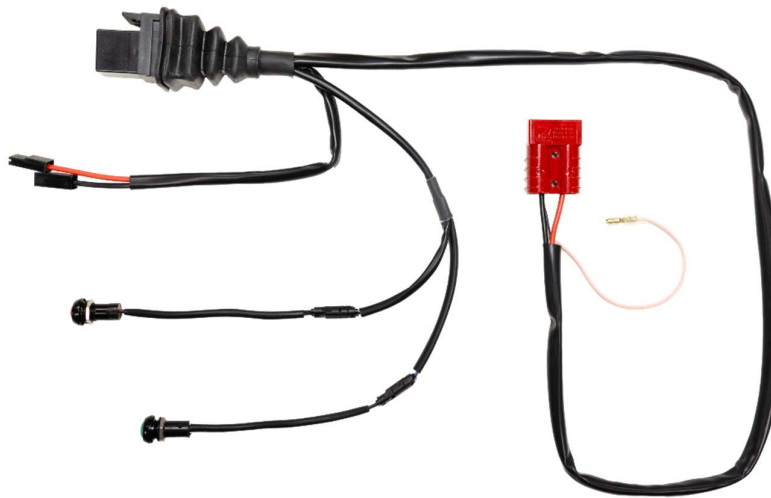
## MINI / MICRO ROK 2026

**OPTION 1 & 2 STARTER WIRING RECCOMENDED BUT NOT MANDATORY**

### OPTION 1



### OPTION 2



Engines shall be mandatory switched on and off by means of onboard starting system. Technical stewart members shall check the on-off onboard system anytime.

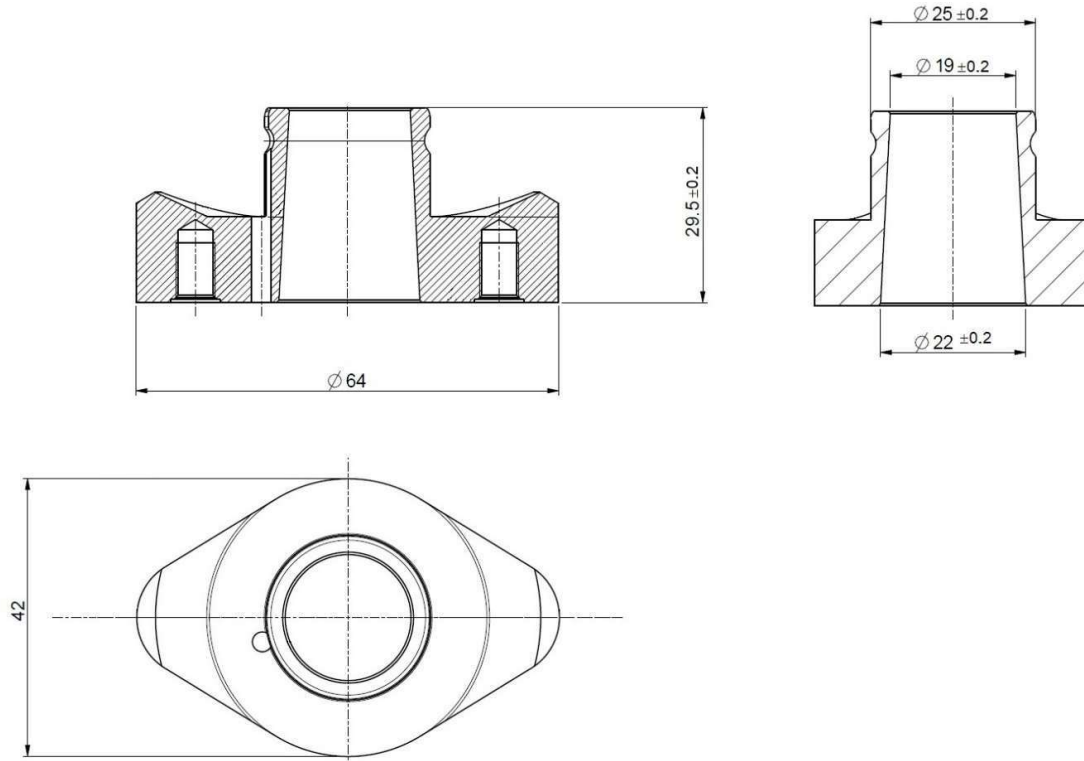
### ATTENTION

**ALL THE ENGINE PARTS MUST BE ORIGINAL BY VORTEX ROK.**

Neither engines nor accessories can be modified. By this we mean any shape, content or function changes which may differ from what originally produced (manufactured and assembled). Furthermore this includes any addition and /or removal of material.  
All dimensions in the technical drawings are in mm.

## MINI / MICRO ROK 2026

### INTAKE MANIFOLD TECHNICAL DRAWING



#### ATTENTION

**ALL THE ENGINE PARTS MUST BE ORIGINAL BY VORTEX ROK.**

Neither engines nor accessories can be modified. By this we mean any shape, content or function changes which may differ from what originally produced (manufactured and assembled). Furthermore this includes any addition and /or removal of material.

All dimensions in the technical drawings are in mm.

## MINI / MICRO ROK 2026

INTAKE MANIFOLD PHOTO



PHOTO OF INTAKE MANIFOLD RUBBER MOUNT



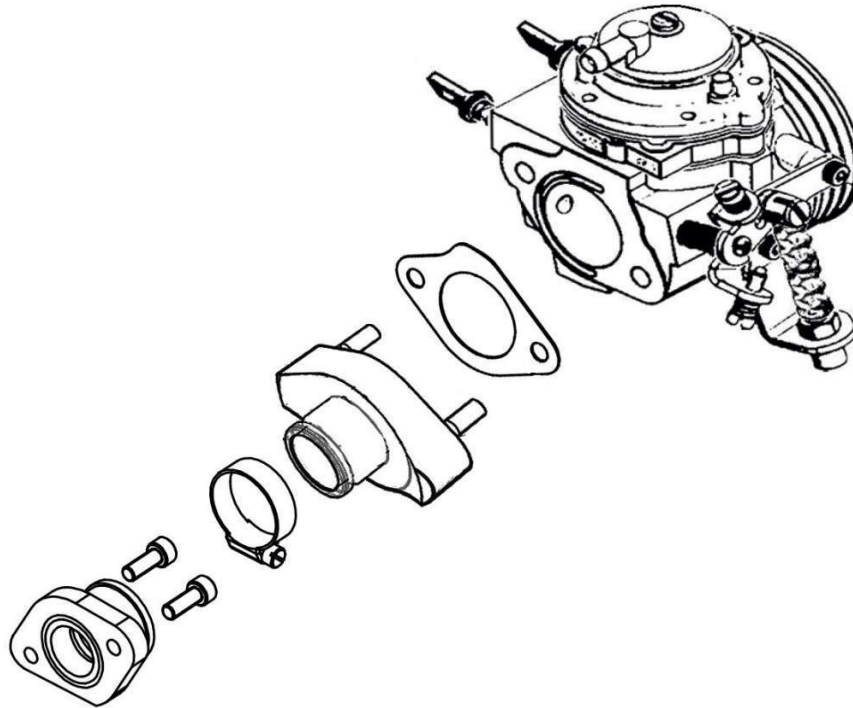
**ATTENTION**

**ALL THE ENGINE PARTS MUST BE ORIGINAL BY VORTEX ROK.**

Neither engines nor accessories can be modified. By this we mean any shape, content or function changes which may differ from what originally produced (manufactured and assembled). Furthermore this includes any addition and /or removal of material.  
All dimensions in the technical drawings are in mm.

## MINI / MICRO ROK 2026

### PHOTO OF THE ASSEMBLY OF THE INTAKE GROUP



#### ATTENTION

**ALL THE ENGINE PARTS MUST BE ORIGINAL BY VORTEX ROK.**

Neither engines nor accessories can be modified. By this we mean any shape, content or function changes which may differ from what originally produced (manufactured and assembled). Furthermore this includes any addition and /or removal of material.

All dimensions in the technical drawings are in mm.

## MINI ROK 2026

### **1. Fuel System:**

- a. All fuel system components must be utilized as supplied.
- b. No additional components are permitted.
- c. Any fuel filter must be fixed between the carburetor and the fuel tank, and no additional component are permitted.

### **2. Carburetor:**

- a. The only allowed Tillotson HW-48A .
- b. Replacement parts must be of the same type and size as originally supplied.

### **3. Air Box:**

- a. Foam air filter insert is optional.
- b. Air box clamps MUST be tight.
- c. Air box must not contain any additional holes.
- d. No external form of air ducts forcing air inside of air box is permitted.
- e. Air box must be secured completely after each track event otherwise last place position is given.
- f. Plastic protection under rain conditions is allowed.

### **4. Coil:**

- a. Must be mounted to the engine.
- b. Must use coil wire as supplied.

### **5. Wiring Harness:**

- a. Wire Harness is open and optional.

### **6. Battery:**

- a. Battery may as supplied or any lightweight battery as long as it is mounted securely in the supplied battery box. No battery or battery box is also allowed.
- b. Battery must fit in supplied battery box.

- c. A secondary battery is allowed to power data systems only: Mychron, Unipro, Alfano, etc.

### **6.5 Spark Plug:**

- a. Only the following plugs allowed:
  - i. NGK B/BR 9EG & 10EG.
  - ii. Must be original and no modification is allowed. (Changing the spark plug gap is allowed).
- b. Original supplied spark plug washer or head temperature gauge sender must be in place.
- c. Spark Plug Cap must be as supplied.

## **7. ExhaustPipe:**

- a. No treatment of any kind.
- b. No sand blasting is allowed.
- c. No form of thermo wrapping is allowed.
- d. Internal dimensions may not be altered because of rust.
- e. No modifications to silencer end cap.
- f. No major likings.
- g. Exhaust temperature sensor:
  - i. One exhaust temperature sensor is allowed.
  - ii. One hole only can be drilled on the exhaust pipe for sensor.
  - iii. No specific location is required for the exhaust temperature sensor.
  - iv. Any hole not being used must be completely plugged if exhaust sensor is not being used.
  - v. Exhaust **MUST** remain intact, as provided by the manufacturer. No cracks and/or welding is permitted.

## **8. ExhaustHeader:**

- a. As per Homologation File.
- b. Headers cannot be cracked or leaking.
- c. A go-no go gauge will be used to control headers. It is allowed to clean the restrictor headers with scotch-brite or solvent.

## **9. Clutch:**

- a. Clutch components **MUST** not contain significant amounts of any kind of oil or grease.
- b. It is NOT mandatory, but recommended to use the dust cover of the clutch bell.

## **10. IgnitionTiming:**

- a. Ignition timing 3mm +/- 1mm

## **11. External Modifications:**

- a. Any modification clearly not called out inside this document is not to be taken as legally acceptable.

## **12. Vortex**

- a. **Engine sprocket:** Vortex 10T, 11T
- b. Cylinder base gasket thickness is non-tech and could be changed to adjust the port timing.
- c. Copper head gasket to adjust squish is allowed, thickness is non-tech.
- d. The shape of the combustion chamber must be original.

## **13. Fuel and Oil**

- a. Spec racing fuel for all Rok Categories is Sunoco STANDARD 110.
- b. Spec racing oil is Motul 2T. No other oil or additives are allowed.